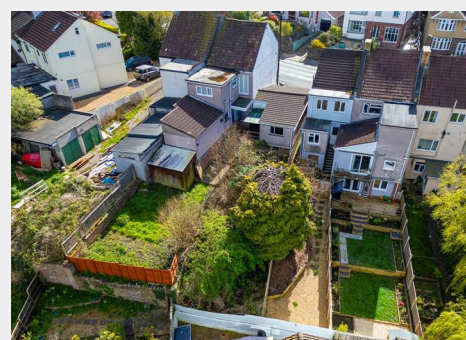
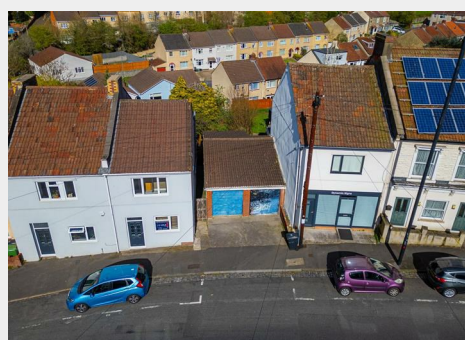
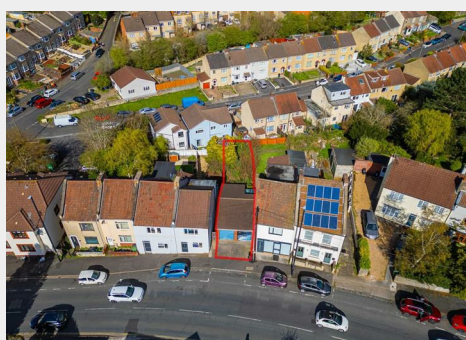
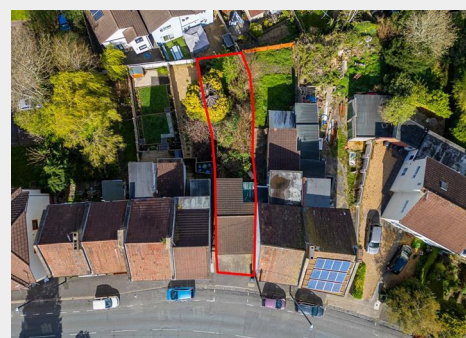


## Land and Garages @, Nags Head Hill, Hanham, Bristol, BS5

Auction Guide Price +++ £50,000



- FOR SALE BY ONLINE AUCTION
- WEDNESDAY 20TH MAY 2026
- VIRTUAL TOUR NOW ONLINE
- VIEWINGS - REFER TO DETAILS
- DOWNLOAD FREE LEGAL PACK
- MAY LIVE ONLINE AUCTION
- FREEHOLD PARCEL OF LAND & GARAGES
- DEVELOPMENT POTENTIAL
- SUBJECT TO PLANNING
- EXTENDED 8 WEEK COMPLETION

Hollis Morgan – MAY LIVE ONLINE AUCTION – A Freehold PARCEL OF LAND AND GARAGES ( 0.06 Acres ) with potential for BUILDING PLOT | DEVELOPMENT stp

# Land and Garages @, Nags Head Hill, Hanham, Bristol, BS5 8LN

## Accommodation

### FOR SALE BY LIVE ONLINE AUCTION

ADDRESS | Land & Garages Adjacent to 25 Nags Head Hill, Hanham, Bristol BS5 8LN

Lot Number 2

The Live Online Auction is on Wednesday 20th May 2026 @ 12:00 Noon  
Registration Deadline is on Friday 15th May 2026 @ 16:00

The Auction will be streamed LIVE ONLINE via the Hollis Morgan website & you can choose to bid by telephone, proxy or via your computer. Registration is a simple online process – please visit the Hollis Morgan auction website and click “REGISTER TO BID”

### THE LAND & GARAGES

A Freehold parcel of land ( 0.06 Acres ) with a pair of single garages ( 509 Sq Ft ) and vehicular access from Nags Head Hill plus a private garden to the rear.

Sold with vacant possession.

Tenure - Freehold

### THE OPPORTUNITY

DEVELOPMENT POTENTIAL

The garages and land offer scope for residential development with potential to demolish and erect a dwelling or flats.

No planning has been recently sought and any development is subject to gaining the necessary consents.

Interested parties to make their own investigations.

### GARAGE | STORAGE

The garages offer excellent storage with a private garden to the rear

### LOCATION

Hanham is a popular urban area in South Gloucestershire on the eastern border of Bristol. It is located near to the A420 with convenient access to both Bristol and Bath. Hanham has its own High Street with local shops, facilities and amenities. Bristol city centre is within 4 miles, Chippenham is 18 miles and Bath is 12.5 miles away.

### SOLICITORS & COMPLETION

Peter Murray  
Star Legal  
01275 858266  
peter.murray@star-legal.co.uk  
<https://www.star-legal.co.uk/>

### EXTENDED COMPLETION

Completion is set for 8 weeks or earlier subject to mutual consent.

### IMPORTANT AUCTION INFORMATION

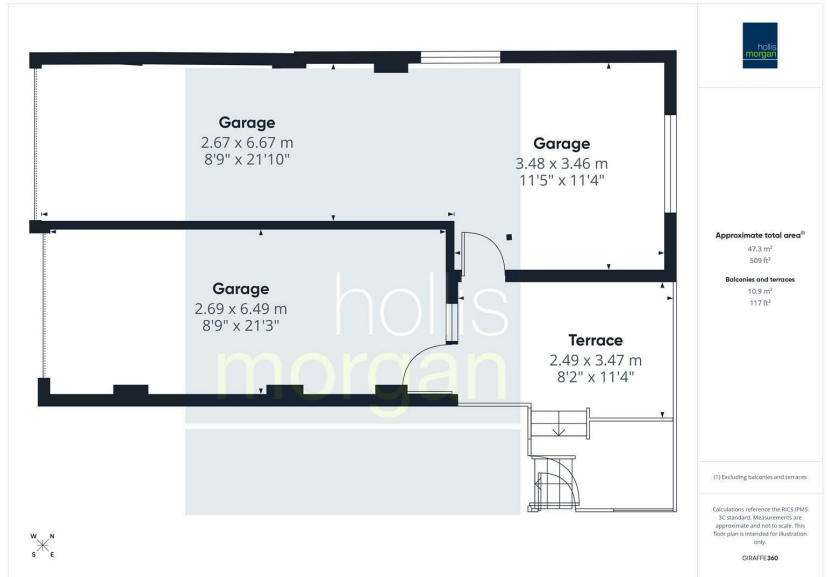
#### VIEWINGS

Please submit a viewing request online and we will contact you to organise an appointment.

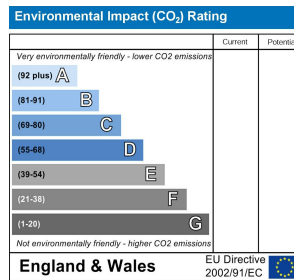
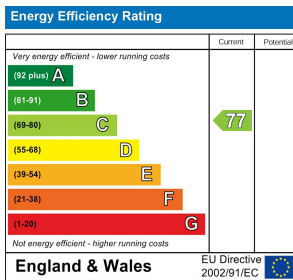
We will send you an email and text to confirm the appointment time and the full property address.

Viewings are supervised by a member of the Hollis Morgan Auction team

## Floor plan



## EPC Chart



9 Waterloo Street

Clifton

Bristol

BS8 4BT

Tel: 0117 973 6565

Email: [post@hollismorgan.co.uk](mailto:post@hollismorgan.co.uk)

[www.hollismorgan.co.uk](http://www.hollismorgan.co.uk)

Hollis Morgan Property Limited, registered in England, registered 7275716.

Registered address, 5 Upper Belgrave Road, Clifton, Bristol BS8 2XQ

## Auction Property Details Disclaimer

Hollis Morgan endeavour to make our sales details clear, accurate and reliable in line with the Consumer Protection from Unfair Trading Regulations 2008 but they should not be relied on as statements or representations of fact.

Please refer to our website for further details.